

novacolor™
I colori dell'Architettura



marmorino^{ks}

Grassello di calce ad effetto satinato per interni ed esterni
Mineral plaster coat with a satin effect for interiors and exteriors



MKS 15100*



MKS 15106*



MKS 15111*



MKS 15116*



MKS 15101*



MKS 15112



MKS 15117*



MKS 15102



MKS 15107



MKS 15146*



MKS 15118*



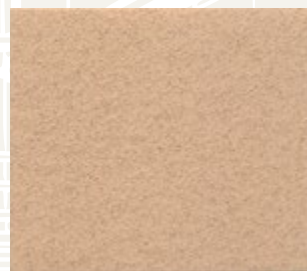
MKS 15103



MKS 15108

I colori contrassegnati con * non sono utilizzabili in esterni.
*Colours marked with * may NOT be used outdoor.*

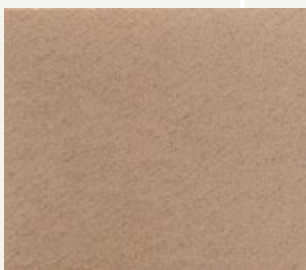
Marmorino KS è a base calce: sono possibili leggere variazioni di colore tra la cartella e lotti diversi di produzione. Si consiglia sempre un unico lotto per ultimare il cantiere.
Marmorino KS contains lime therefore slight colour variations between colour card and different batch numbers may always occur. It is highly recommended not to use different batch numbers to finish up the same surface.



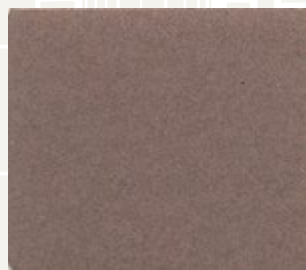
MKS 15113



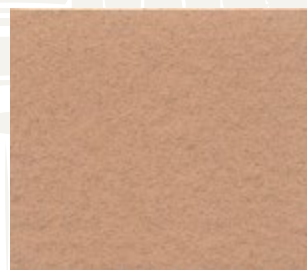
MKS 15119



MKS 15104*



MKS 15109*



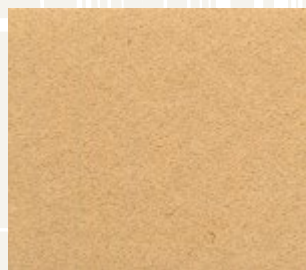
MKS 15114*



MKS 15120*



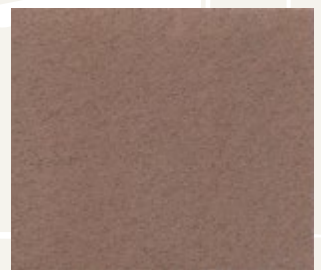
MKS 15105*



MKS 15110*



MKS 15115*



MKS 15121*

Marmorino KS

IT Grasso di calce ad effetto satinato per interni ed esterni

Applicare Marmorino KS in due strati con spatola inox, in funzione dell'effetto desiderato.

Resa: 0,8-1 Kg/m² in due strati.

Per maggiori informazioni consultare la scheda tecnica.

EN Mineral plaster coat with a satin effect for interiors and exteriors

Apply Marmorino KS in two layers with a stainless steel trowel, according to the desired effect.

Yield: 0,8-1 Kg/m² in two layers.

For more information please check the technical data sheet.

FR Enduit à la chaux à effet satiné pour intérieurs et extérieurs

Appliquer Marmorino KS en deux couches avec truelle inox, en fonction de l'effet désiré.

Rendement: 0,8-1 Kg/m² en deux couches.

Pour plus d'informations consulter la fiche technique.

DE Feine Spachtelmasse auf Kalkbasis zur Dekoration von Oberflächen im Innen- und Aussenbereich

In zwei Schichten mit Stahlspachtel auftragen und glätten.

Verbrauch: 0,8-1 Kg/m² in den zwei Schichten.

Für weitere Info bitte siehe technisches Merkblatt.

ES Producto a base de cal con efecto satinado para interiores y exteriores

Aplicar Marmorino KS en dos capas con la espátula inox, en función del efecto deseado.

Rendimiento: 0,8-1 Kg/m² en dos capas.

Para mayor información consultar la ficha técnica.



MKS 15122*



MKS 15128



MKS 15132*



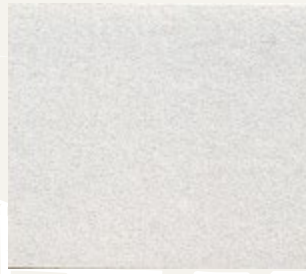
MKS 15137



MKS 15123



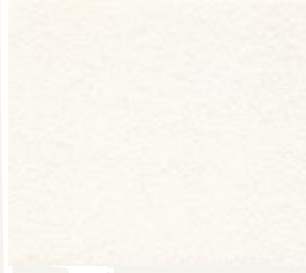
MKS 15144*



MKS 15133



MKS 15138



MKS BIANCO

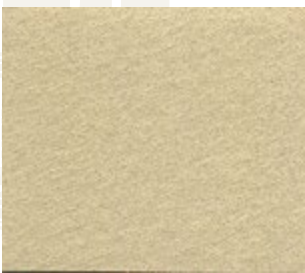


MKS 15139



MKS 15124

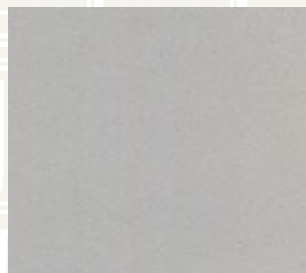
Le tonalità qui riprodotte, pur avvicinandosi a quelle di fornitura, sono indicative. Per una corretta lettura dei colori si raccomanda di consultare questa cartella alla luce solare.
The colour shades herein reproduced are purely indicative, as small variations may occur. For a correct reading of the colours it is recommended to examine the catalogue under direct sunlight.



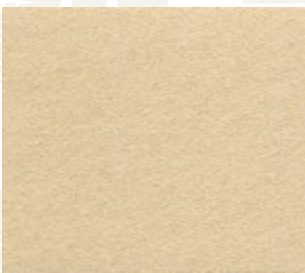
MKS 15125



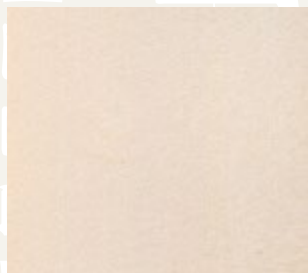
MKS 15129



MKS 15142



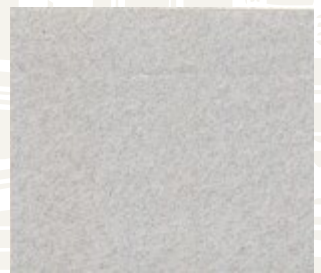
MKS 15126



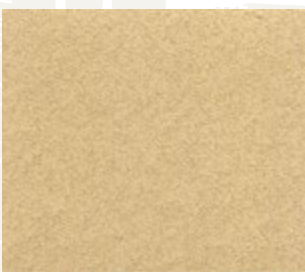
MKS 15145



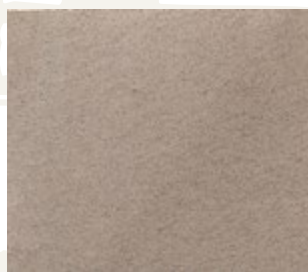
MKS 15147



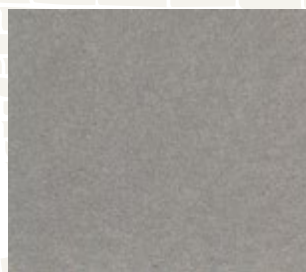
MKS 15140



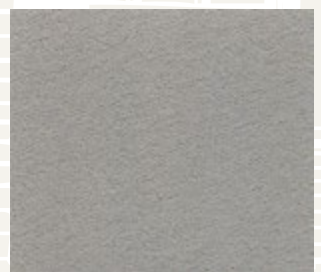
MKS 15127*



MKS 15131*



MKS 15143*

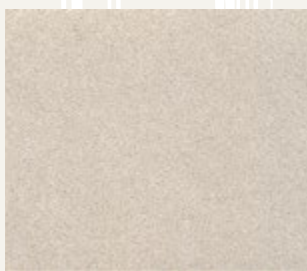


MKS 15141*

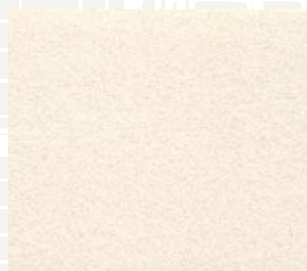
Marmorino KS color trends



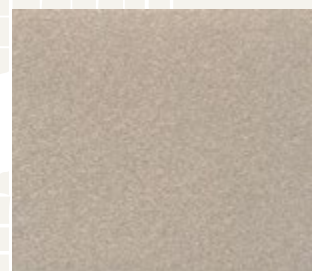
MARMORINO KS MKS 15130* + CERA WAX NEUTRA



MKS 15134



MKS 15135



MKS 15136



novacolor[™]
I colori dell'Architettura

NOVACOLOR srl - 47122 Forlì - Italia
Tel +39 0543 401840 - fax +39 0543 414585
Via U. Aldrovandi, 10 - info@novacolor.it



NOVACOLOR is committed to reduce the environmental impact by producing friendly materials.

Made in Italy



**AZIENDA CON SISTEMA
DI GESTIONE QUALITÀ
CERTIFICATO DA DNV GL
= ISO 9001 =**

**COMPANY WITH
QUALITY SYSTEM
CERTIFIED BY DNV GL
= ISO 9001 =**