



WALL2FLOOR

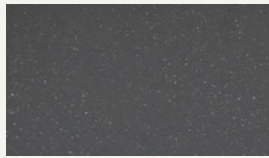
Seamless system for the decoration of walls and floors

novacolor™
I colori dell'Architettura

WALL2FLOOR

Pietra è materia, presente e passato senza confini. Forza colore. Wall2Floor esalta la materia, come elemento di decorazione contemporaneo, unico, inimitabile.





W2F 058



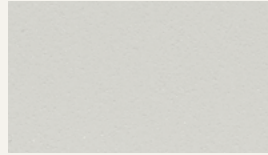
W2F 057



W2F 055



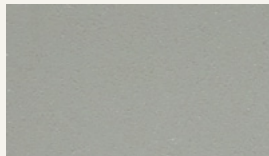
W2F 056



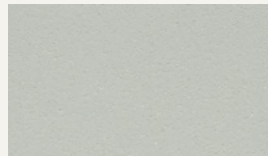
W2F 060



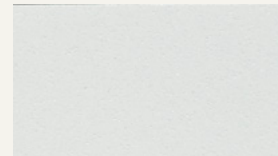
W2F 062



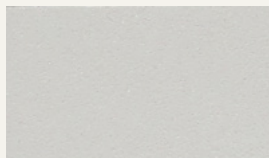
W2F 048



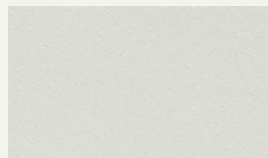
W2F 053



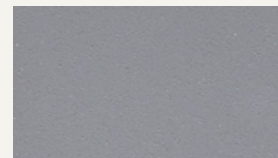
W2F 063



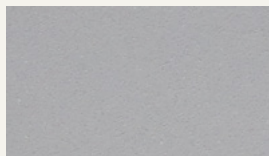
W2F 061



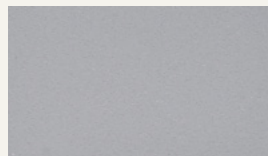
W2F 059



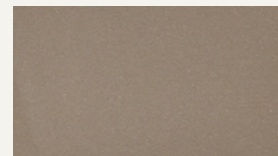
W2F 064



W2F 038

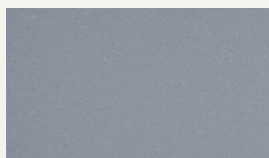


W2F 041

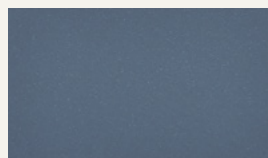


W2F 044

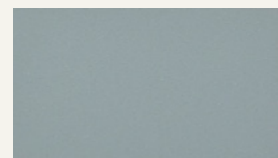
Stone is earth, past and future, limitless yet contemporary.
Strength and colour. Wall2Floor celebrates materials, as an element
of urban decoration, unique, incomparable.



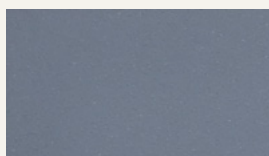
W2F 039



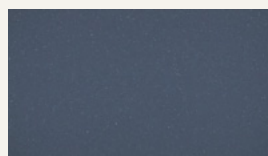
W2F 042



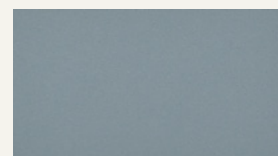
W2F 045



W2F 040



W2F 043

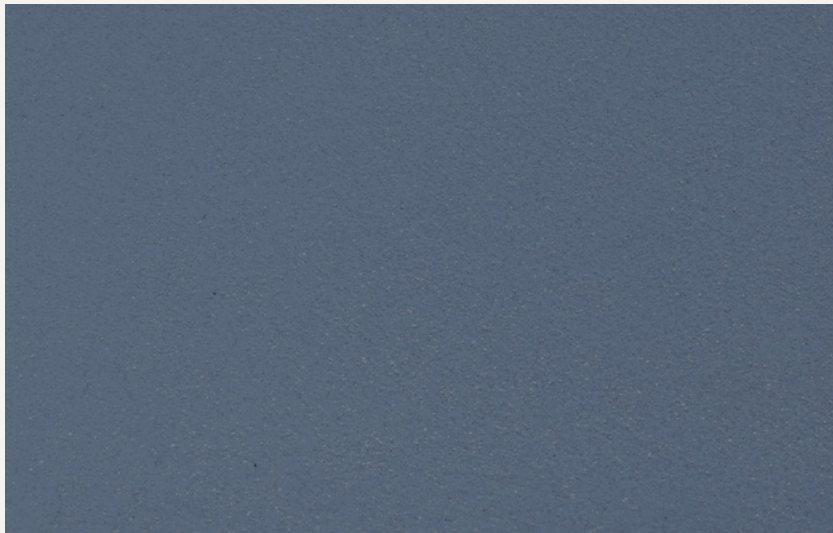


W2F 046

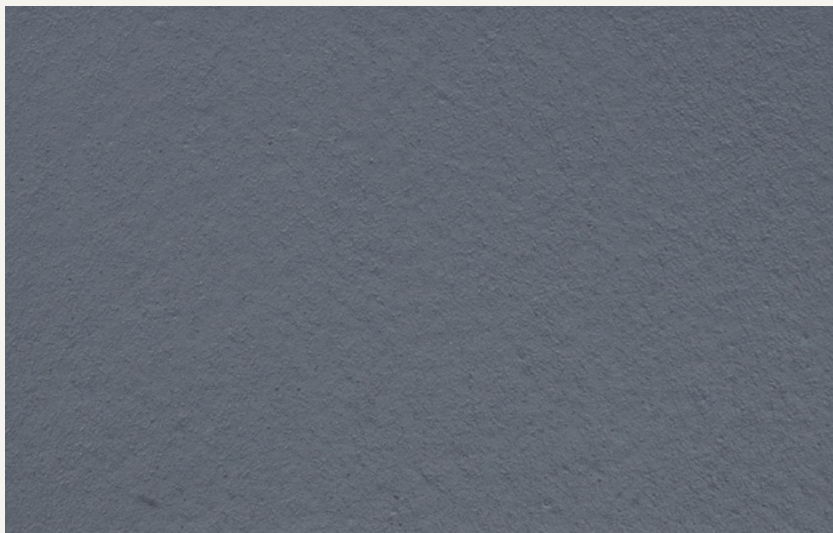




W2F 041 SATIN



W2F 042 GLOSSY



W2F 043 MATT

Wall2Floor

Seamless system for the decoration of walls and floors

Ⓘ **Wall2Floor** è un sistema multistrato che permette di ottenere, su superfici orizzontali e verticali interne, rivestimenti continui, secondo le più recenti tendenze dell'architettura di alto pregio ad uso civile.

Il sistema Wall2Floor è composto da:

Wall2Floor Rasal NF: rasante cementizio di preparazione.

Wall2Floor Top Coat NF: rivestimento decorativo per superfici orizzontali e verticali.

Wall2Floor Componente B: additivo in polvere specifico per Wall2Floor Top Coat NF.

Wall2Floor Primer: primer bi-componente ad elevato potere penetrante.

Wall2Floor Clear Finish Satin, Matt, Glossy: finitura poliuretanica bi-componente all'acqua.

Clear Finish Countertop Protection: Protettivo poliuretanico bi-componente specifico per piani di cucine e bagni.

Wall2Floor Patina: Patina metallizzata per la decorazione di superfici interne in Wall2Floor.

Ⓔ **Wall2Floor** is a multi-layered system that permits to achieve, on both horizontal and vertical interior surfaces, seamless continuous coating according to the most cutting-edge trends in high-end architecture.

The system is composed of:

Wall2Floor Rasal NF: levelling cement-based product for the preparation of the surface.

Wall2Floor Top Coat NF: decorative coating for horizontal and vertical surfaces.

Wall2Floor Component B: specific additive in powder for Wall2Floor Top Coat NF.

Wall2Floor Primer: high penetrating bi-component primer.

Wall2Floor Clear Finish Satin, Matt, Glossy: bi-component polyurethane finish.

Clear Finish Countertop Protection: Polyurethane bi-component protection specific for kitchens and bathrooms' countertops.

Wall2Floor Patina: Metallic patina for interiors decorated with Wall2Floor.

Ⓕ **Wall2Floor** est un système multicouches qui permet d'obtenir une finition continue sur surfaces horizontales et verticales, en ligne avec les plus modernes tendances de l'architecture.

Le système Wall2Floor est composé de:

Wall2Floor Rasal NF: Pate pour rasage à base de béton.

Wall2Floor Top Coat NF: Revêtement décoratif pour surfaces horizontales et verticales.

Wall2Floor Component B: Additif en poudre spécifique pour Wall2Floor Top Coat.

Wall2Floor Primer: primer bi-composant fortement pénétrant.

Wall2Floor Clear Finish Satin, Matt, Glossy: finition polyuréthane bi-composant à base d'eau.

Clear Finish Countertop Protection: Protectif en polyuréthane bi-composante, pour plans de travail des cuisines et salles de bain.

Wall2Floor Patina: Patine métallisée pour la décoration des surfaces internes en Wall2Floor.

Ⓖ **Das System Wall2Floor NF** ist ideal für die Anwendung im Bereich des Privat- oder Gewerbewohnungsbaus, Wohnungen, Büros, Geschäfte, Showrooms. Das System ermöglicht Sanierungseingriffe an horizontalen und vertikalen Untergründen.

Das System Wall2Floor NF besteht aus:

Wall2Floor Rasal NF: Zementspachtelmasse zur Vorbereitung.

Wall2Floor Top Coat NF: Dekorative Beschichtung für horizontale und vertikale Oberflächen.

Wall2Floor Komponente B: Spezifischer Zusatzstoff in Pulverform für Wall2Floor Top Coat NF.

Wall2Floor Primer: Zweikomponenten-Primer mit hoher Eindringkraft.

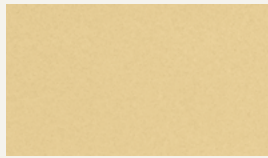
Wall2Floor Clear Finish Satin, Matt, Glossy: Zweikomponenten-Polyurethan-Oberflächenbehandlung auf Wasserbasis.

Clear Finish Countertop Protection: Polyurethanischer, leistungsstarker Zweikomponenten-Schutzanstrich für Küchen- und Badezimmer-Oberflächen.

Wall2Floor Patina: MetallisiertLasur für Wall2Floor Top Coat NF dekorierten Oberflächen.



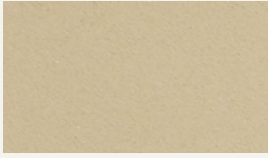
W2F 020



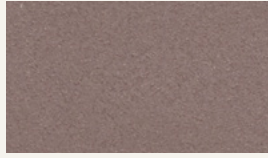
W2F 021



W2F 028



W2F 023



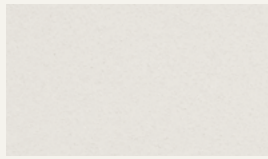
W2F 035



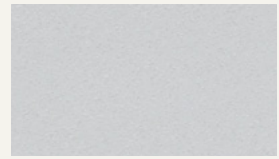
W2F 037



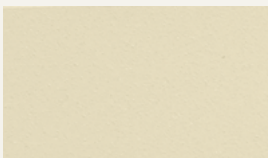
W2F 022



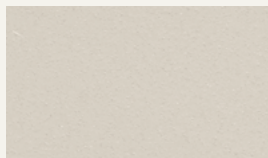
W2F 034



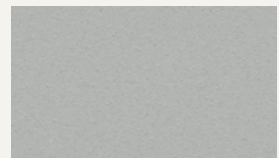
W2F 054



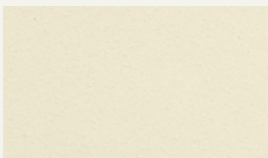
W2F 024



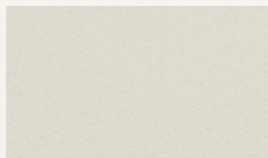
W2F 033



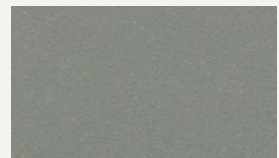
W2F 047



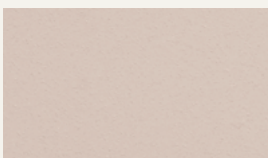
W2F 025



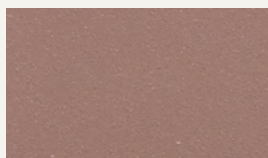
W2F 032



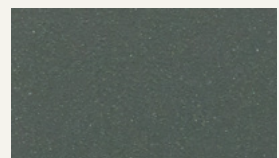
W2F 049



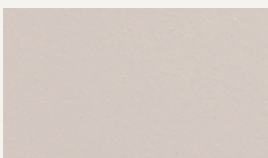
W2F 026



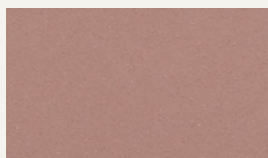
W2F 031



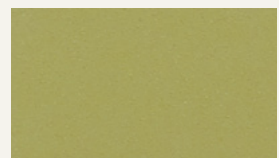
W2F 050



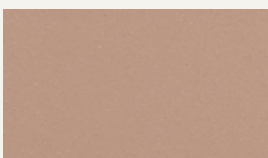
W2F 027



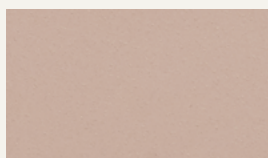
W2F 030



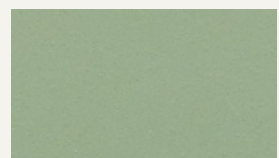
W2F 052



W2F 036



W2F 029



W2F 051





W2F 055 + PATINA GOLD - GLOSSY



W2F 055 + PATINA PLATINO - GLOSSY



W2F 055 + PATINA SILVER - GLOSSY

www.novacolor.it



freedot

04/2016

N000111

novacolor[™]
I colori dell'Architettura

NOVACOLOR srl - 47122 Forlì - Italia
Tel +39 0543 401840 - fax +39 0543 414585
Via U. Aldrovandi, 10 - info@novacolor.it



NOVACOLOR is committed to reduce the environmental impact by producing friendly materials.

Made in Italy



**AZIENDA CON SISTEMA
DI GESTIONE QUALITÀ
CERTIFICATO DA DNV GL
= ISO 9001 =**

**COMPANY WITH
QUALITY SYSTEM
CERTIFIED BY DNV GL
= ISO 9001 =**